

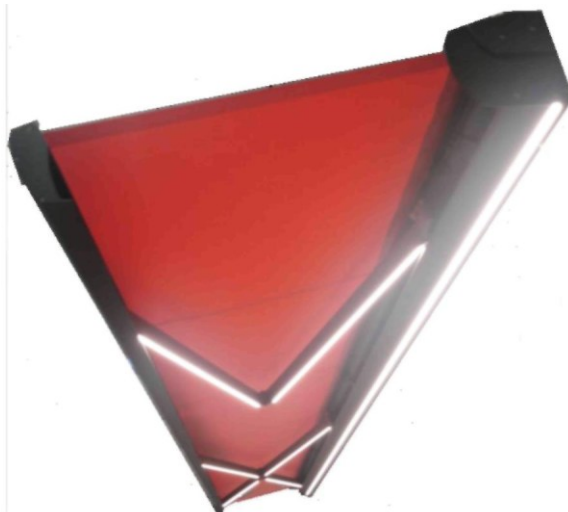
## **OPERATING AND MAINTENANCE MANUAL**

### **INSTALLATION, OPERATION AND SAFETY INSTRUCTIONS**

(Translation of the original instructions)

#### 11. Awnings

##### 11.16. LED light kit



**PRODUCT NAME:**

LED LIGHT KIT

AWNING: AUSTRALIA/JAMAICA/PALLADIO/CORSICA

**OEM PRODUCT DESIGNATION:**

- Manufacturer's name:  
SELT Sp. z o. o.  
KRS 0000589791, share capital: 211,815,000 PLN  
NIP (tax ID): 7543103311, REGON: 363154414, BDO 000009177
- Head office:  
45- 449 Opole, ul. Wschodnia 23A
- Contact details:  
Tel.: +48 534 598 065
- Website:  
[www.selt.com](http://www.selt.com)
- E-mail:  
[kontakt@selt.com](mailto:kontakt@selt.com)

**PRODUCT SAFETY MARKING:**

This product meets CE safety requirements.

**THIS MANUAL:**

- is valid from: 1 April 2025.
- applies to the product versions specified above

**CONTENTS**

CONTENTS .....	3
1.1 PRODUCT SAFETY GUIDELINES:.....	4
1.2 EXPLANATION OF SIGNS AND SYMBOLS .....	4
1.3 TERMS AND DEFINITIONS .....	5
1.4 SUBJECT, INTENDED USE, AND CONTENTS OF THIS MANUAL .....	5
2 PRODUCT'S TECHNICAL SPECIFICATIONS .....	6
2.1 TECHNICAL SPECIFICATIONS:.....	6
2.2 PRODUCT OVERVIEW.....	7
3 TRANSPORT AND STORAGE.....	7
3.1 DELIVERY CONTENTS AND QUALITY CONDITIONS .....	7
3.2 GENERAL CONDITIONS FOR TRANSPORT AND STORAGE .....	7
3.3 OBLIGATORY NOTICES DISPLAYED ON THE PRODUCT PACKAGING .....	8
4 INSTALLING THE PRODUCT .....	8
4.1 GENERAL REQUIREMENTS FOR SAFE INSTALLATION .....	8
4.2 REQUIREMENTS FOR SAFE PRODUCT INSTALLATION AT HEIGHT .....	8
4.3 PREPARATION FOR THE INSTALLATION PROCESS .....	8
4.4 GENERAL PRODUCT INSTALLATION GUIDELINES.....	9
4.5 INSTALLATION TOOLS .....	9
4.6 INSTALLATION PROCEDURE.....	10
4.6.1 SCISSOR ARM LED STRIP .....	10
4.6.2 BOTTOM FASCIA LED STRIP .....	11
4.6.3 REPLACING THE BOTTOM FASCIA LED STRIP .....	12
4.7 ELECTRICAL POWER SUPPLY .....	13
4.7.1 WIRING THE ELECTRICAL POWER SYSTEM .....	13
4.7.2 COMMISSIONING AND ADJUSTMENT .....	14
5 SYSTEM OPERATION AND PRODUCT SAFETY .....	14
5.1 GENERAL HEALTH AND SAFETY REQUIREMENTS .....	14
5.2 SAFETY REQUIREMENTS FOR SPECIFIC OPERATING CONDITIONS AND LOCATIONS .....	14
5.3 OPERATING SAFETY .....	15
5.4 CONTROLS .....	15
5.5 COMMISSIONING AND ADJUSTMENT .....	16
5.6 SYSTEM MISUSE .....	16
6 USE AND MAINTENANCE OF THE SYSTEM .....	16
6.1 INTENDED USE OF THE SYSTEM.....	16
6.2 INSTRUCTIONS FOR NON-PROFESSIONALS.....	17
6.3 SPECIFICATIONS OF RISKS, FAILURE AND ACCIDENTS .....	17
6.4 TECHNICAL INSPECTIONS AND REPAIRS .....	17
7 WARRANTY CLAIMS / TECHNICAL DEFECTS.....	18
7.1 WARRANTY CLAIMS (ON MANUFACTURER'S COMMERCIAL WARRANTY).....	18
7.2 TECHNICAL DEFECTS.....	18
8 DISMANTLING / DISPOSAL / LIQUIDATION OF THE PRODUCT .....	19
9 CE LABELLING AND MARKING OF THE PRODUCT .....	19
9.1 PRODUCT CONFORMITY WITH THE CE STANDARDS.....	19
10 LIABILITY DISCLAIMER .....	20
10.1 LIABILITY DISCLAIMER .....	20

## 1 INTRODUCTION

### 1.1 PRODUCT SAFETY GUIDELINES:






This product has been manufactured in accordance with the latest technical knowledge in design and manufacturing processes and meets the safety requirements established in the standards listed below.


No.	Subject	Applicable European laws	Applicable Polish laws
1	EMC (Electromagnetic Compatibility) Directive	Directive 2014/30/EU of the European Parliament and of the Council	Polish Electromagnetic Compatibility Act of 13.04.2007 (consolidated in Dz. U. 2022.2233) Polish Conformity Assessment and Market Surveillance Systems Act of 13.04.2019 (Dz. U. 2022.1854) as amended
2	Low Voltage Directive (LVD)	Directive 2014/35/EU of the European Parliament and of the Council	Polish Regulation of the Minister of Development dated 2.06.2016 and concerning Electrical Equipment Requirements (consolidated in Dz. U. 2016.806) Polish Conformity Assessment and Market Surveillance Systems Act of 13.04.2019 (Dz. U. 2022.1854) as amended
3	LED modules for general lighting. Safety specifications.	EN IEC 62031:2020-08	PN-EN IEC 62031:2020-08
4	Photobiological safety of lamps and lamp systems	EN 62471:2008	PN-EN 62471:2010

Relevant documents: Declarations of Conformity for the LED strip and its power supply; power supply and control installation manual.

### 1.2 EXPLANATION OF SIGNS AND SYMBOLS

The following symbols indicate particularly important safety information.

Symbol	Explanation	Wording
	NOTICE	Read the instructions before use. Compliance with the instructions is required for: - trouble-free operation of the product; - its intended use; - continued consumer rights granted under e.g. the warranty policy. Keep the instructions for personnel safety.
	NOTICE	No harmful or hazardous consequences for people or property are involved.
	CAUTION!	Indicates a condition which may result in product damage or that an action is required from the user. No hazard to people is involved.
	DANGER!	Indicates all safety notices failure to comply with which will result in injury or death. Health or life hazard. Risk: danger of severe injury or death. Dangerous operation which may result in injury or product damage.
	WARNING!	Health or life hazard by electrocution.

	ENVIRONMENT	This symbol is displayed on electrical and electronic equipment subject to mandatory separate collection at dedicated waste collection facilities.
---	-------------	--

### 1.3 TERMS AND DEFINITIONS

The terms and definitions used in this document have the following meaning:

**The product: LED light kit**

Intended for DIY installation in the following awning models: Australia, Jamaica, Palladio, Corsica. The product is a set of components which enable installation of lights in awning scissor arms with an overhang of 310 cm or 360 cm using COB LED strips; for the Corsica awning, another COB LED strip is provided for installation in the bottom fascia of the scissor drive box.

The product includes a 240V AC/24V DC integrated power supply and control module, a wireless remote, power cables, power J-boxes, and LED strips in silicone compound potting.

Depending on your purchase order, the product can be installed DIY in the strip receiver grooves of 310 cm or 360 cm awning scissor arms and (for the Corsica only) the bottom fascia of the scissor drive box

**DESIGN VERSIONS:**

**Scissor arm LED light kit:** this is a DIY-installed LED light kit. It includes two-sectional LED strips potted in silicone compound with cable connectors and plug-in terminals, one or two wiring harnesses, a power J-box (for three scissor arms), a power and control unit, and a remote.

**Scissor arm and fascia LED light kit (for the Corsica awning only):** this is a DIY-installed LED light kit. It includes the scissor arm LED light kit (see above), another power J-box, a 5 m or 7 m long LED strip potted in silicone compound (the length varies with the scissor drive box width), which can be trimmed on site.

**Fascia LED light kit (for the Corsica awning only):** this is a DIY-installed LED light kit. It includes a 5 m or 7 m long LED strip potted in silicone compound (the length varies with the scissor drive box width), which can be trimmed on site, a power and control unit, and a remote.

### 1.4 SUBJECT, INTENDED USE, AND CONTENTS OF THIS MANUAL

This Manual concerns specific products manufactured by **SELT Sp. z o.o.**

This Manual concerns the LED light kit for the following awning models: **Australia, Jamaica, Palladio, and Corsica.**



Hand the Installation, Operation and Safety Instructions to the end user of the product.

**IMPORTANT SAFETY INSTRUCTIONS**  
**WARNING: COMPLIANCE WITH THESE INSTRUCTIONS IS CRITICAL TO THE SAFETY OF PEOPLE**  
**KEEP THE INSTRUCTIONS FOR FUTURE REFERENCE**

This Manual is included with the product delivery and must be always kept near the product.

This Manual includes:

- important recommendations for the installation, use and maintenance of the product;
- important recommendations for transport and storage;
- guidelines to be followed in order to operate the product.

**SELT Sp. z o.o. shall not be liable for any damage or injury resulting from failure to comply with the recommendations contained in this Manual.**

In pursuit of continuous improvement of its products, SELT Sp. z o.o. reserves the right to all modifications which do not alter major technical specifications of the products while being deemed necessary to improve the quality, operation, and safety of the products.

All copyrights to this Manual are held by SELT Sp. z o.o. with the headquarters in Opole. Any use of this Manual, in whole or part, requires prior consent from SELT Sp. z o.o.

## 2 PRODUCT'S TECHNICAL SPECIFICATIONS

The technical specification of this product is available by logging on to [www.selt.com](http://www.selt.com).

### 2.1 TECHNICAL SPECIFICATIONS:

Technical specifications of the COB LED light kit (Note: compatible with SOMFY drive units only)	
LED kit length for 310 cm scissor arms	150 cm+139 cm, 105 mm flex cable and 200 mm connection cable (w/plug)
LED kit length for 360 cm scissor arms	175 cm+164 cm, 105 mm flex cable and 200 mm connection cable (w/plug)
LED kit length for the Corsica fascia	5.0 m or 7.0 m with 200 mm connecting cable (w/plug)
LED strip height	5.5 mm
LED strip width	12.4 mm
Technical specifications of the LED strip	
LED module type:	COB (linear, with LED modules potted in a silicone compound backing profile for snap-lock installation)
- power supply	24 V DC
- light temperature	3000 K (warm white)
- power	7 W / linear metre
- LEDs	480 LED modules / linear metre
- luminous power	700 lm / linear metre
- colour rendering index (CRI) (Ra)	80+
- light beam angle	180°
- input current	254 mA/m (max.)
- protection rating	IP 65
- LED strip length / cut-off length	310 mm scissor arms: 148+138 cm; 360 mm scissor arms: 173+163 cm; Corsica fascia: 5.0 m or 7.0 m LED strip, cut-off spacing every 5 cm
- LED strip width (w/backing profile)	12.4 mm
- operating temperature	-20°C to +40°C
Power and control unit (PCU) specifications	
Power	100 W
Frequency	868 MHz
- power supply	230 V AC
- output	24 V DC (2 output sockets, 20 cm each) max. 2.5 A
- protection rating	IP 44

See the detailed performance specifications of the power and control units (PCUs) on the OEM websites and Selt's official website:

[www.selt.com](http://www.selt.com) → OUR OFFER → ELECTRIC EQUIPMENT

The tested (\* theoretically calculated) power demand of 24 V LEDs may vary with the configuration.

			1,13 A*	1,58 A	1,50 A	1,75 A	3,08 A	3,33 A	2,25 A	2,63 A	2,63 A*	2,88 A*	3,38 A*	3,76 A*	3,83 A	4,21 A
LED strip	Current	Power	27 W*	38 W	36 W	42 W	74 W	80 W	54 W	63 W	63 W*	69 W*	81W*	90W*	92 W	101W
310 mm scissor arms	0,75 A	18 W			2 pcs.		2 pcs.		3 pcs.		2 pcs.		3 pcs.		3 pcs.	
360 mm scissor arms	0,88 A	21 W				2 pcs.		2 pcs.		3 pcs.		2 pcs.		3 pcs.		3 pcs.
Bottom fascia LED strip, L=5m*	1,13 A*	27 W*	1 pc.								1 pc.	1 pc.	1 pc.	1 pc.		
Bottom fascia LED strip, L=7m	1,58 A	38 W		1 pc.			1 pc.	1 pc.							1 pc.	1 pc.

## 2.2 PRODUCT OVERVIEW

**This overview explains the features of the product:**

- The LED strip is potted in a silicone compound backing profile rated at IP65 for good protection
- The LED strip profile shape enables snap-in installation without any adhesives or retaining hardware
- The scissor arm LED light kits are factory-made to fit the scissor arms and feature flex cables to conform with the scissor arm joints
- Warm white light
- Power and control unit (PCU) integrated in a single housing with two power outputs to fit factory connectors
- The cable connections use factory-installed plugs with a threaded sealing cap

## 3 TRANSPORT AND STORAGE

### 3.1 DELIVERY CONTENTS AND QUALITY CONDITIONS

The products by SELT Sp. z o.o. should conform to their manufacturing process standards. If the product is questionable in any way or the delivery packaging of the product is damaged, claim this to the freight forwarder / warehouse worker / installation crew as applicable and record the claim on the proof of delivery; otherwise no claims will be accepted. Have the freight forwarder, if applicable witness and sign off on a claim report which details the questionable condition or damage.

When accepting the delivery, claim all damage, scratching, cracks, etc. and missing delivery items, as applicable, or the claim will not be accepted. Report all hidden defects found according to the commercial or statutory warranty policy which applies.

### 3.2 GENERAL CONDITIONS FOR TRANSPORT AND STORAGE

**List:**

- The product is factory packed in a cardboard box for protection against damage during storage, transport and handling at the installation site.
- Position the packaged product for transport/storage in the orientation shown by the arrows on the box;
- do not stack more than 2 product boxes; otherwise the lower box(es) may collapse and permanently damage the contents;
- do not place any loads on top of the product box;

- secure the products on the load bed of the transport vehicle to prevent shifting and impact damage (use dunnage, lashing, etc.);
- shelter the products in transport against snow and rain;
- the storage location should be dry, sheltered (from rain, snow, sun, etc.) and ventilated ;
- if the weight of the product exceeds 25 kg, it must be handled to its installation location by at least two people (or more, depending on the actual weight of the packaging).

### 3.3 OBLIGATORY NOTICES DISPLAYED ON THE PRODUCT PACKAGING



Before installing and operating this product, read the Operating and Maintenance Manual available on <http://www.selt.com/dte-pl>

## 4 INSTALLING THE PRODUCT

This Section specifies the general requirements for the installation of this product. Correct installation is a prerequisite for trouble-free operation of the product.

SELT Sp. z o.o. recommends hiring professional installer crews which will ensure proper installation of the product for the buyer.

### 4.1 GENERAL REQUIREMENTS FOR SAFE INSTALLATION

- Follow the applicable health and safety regulations, especially those concerning safe operation and servicing of electrical equipment and work at height;
- This product must be wired according to its manufacturer's instructions and good electrical wiring practice;
- Before attempting to install this product, remove all obsolete objects and obstacles from the installation site, mark the site with warning and notice signs, and use proper precautions for personnel safety.

### 4.2 REQUIREMENTS FOR SAFE PRODUCT INSTALLATION AT HEIGHT



The installation of this product which requires working at height is an extremely hazardous work task, leading to an extremely high risk of hazard to human safety and health, especially by falling from height.

The installer or the project owner are legally required to prepare a HASP (health and safety plan) for such a work task.

The project owner/installer has to specify specific health and safety requirements for working at height, and specifically, to ensure:

- direct supervision of work at height execution by designated personnel only (e.g. the foreman or team leader);
- proper protective equipment, with priority for fall protection/arrest equipment;
- detailed job safety briefing for the personnel to work at height.

Any work at a height of more than 2 m which requires personal fall protection/arrest equipment must be done in teams of two or more people.

Work at height must be organised and performed without forcing any worker to lean over railings or floor edges. Do not step on any part of this product.

The project owner/installer is required to restrict access to work at height sites to authorised, briefed, and trained personnel only. The project owner/installer is required to advise on every work at height and the necessary safety precautions which must be used during work at height by everyone who is or might enter the site or areas adjacent to it.

### 4.3 PREPARATION FOR THE INSTALLATION PROCESS

- Unpack the product and make sure that all the components necessary for its installation are present.



4.4 GENERAL PRODUCT INSTALLATION GUIDELINES

- Incorrect installation or errors during installation and wiring to the electrical supply system can have serious consequences on the operation of the product.
- Check that the installation space is clear of obstructions before proceeding.
- Protect the product from soiling (with e.g. mortar, installation foam, silicone caulk, etc.) which may damage it;
- Trim the LED strip (applicable to the Corsica fascia LED strip) along the marked cut-off lines using hand-operated tools only.



Incorrect installation and wiring may result in hazards to the end user.

4.5 INSTALLATION TOOLS

The Installation, Operation and Safety Instructions are available upon logging on to [www.selt.com](http://www.selt.com).


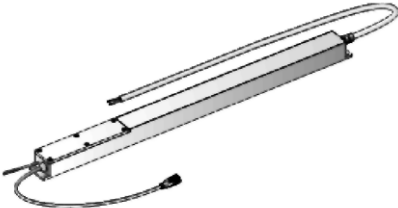
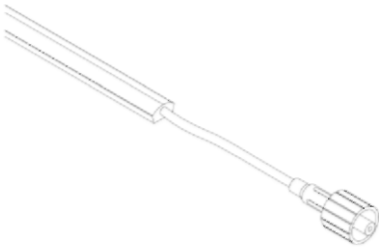
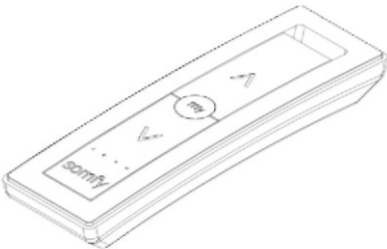
List:



- Tape measure
- Utility knife
- Power driver (with a dia. 8 mm drill bit, applies to the fascia LED strip installation)
- Pencil or felt-tip pen



- Note:**
- Inspect the visual condition of the product packaging, the unpacked product components, and make sure all of them are present before installing. All damage caused in transport to the delivery destination is the liability of the freight forwarder.
  - The product components are supplied in factory-sealed poly envelopes for protection during transport.
  - Accessories are supplied in cardboard boxes:

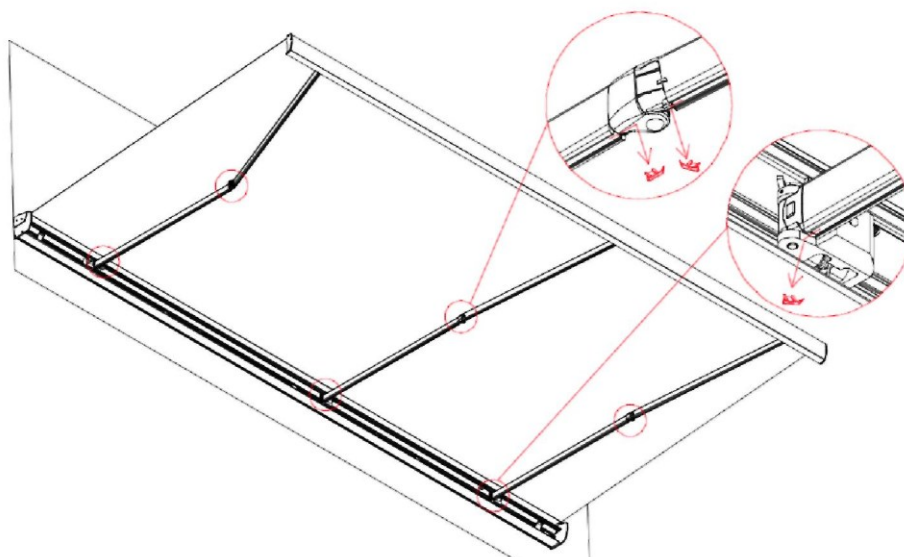
List of product components:

COB LED strip (for 310 or 360 cm scissor arms) with wiring plug		PCU	
LED COB strip (in 5 m or 7 m long reels) with wiring plug		7-channel remote control	

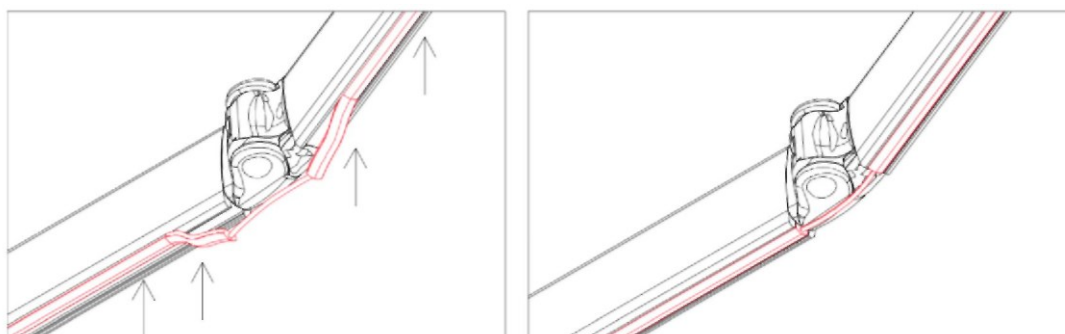
Three-way adapter		Extension cable	
-------------------	---	-----------------	---

## 4.6 INSTALLATION PROCEDURE

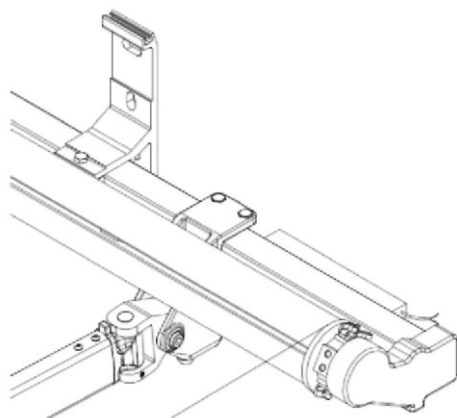
### 4.6.1 SCISSOR ARM LED STRIP



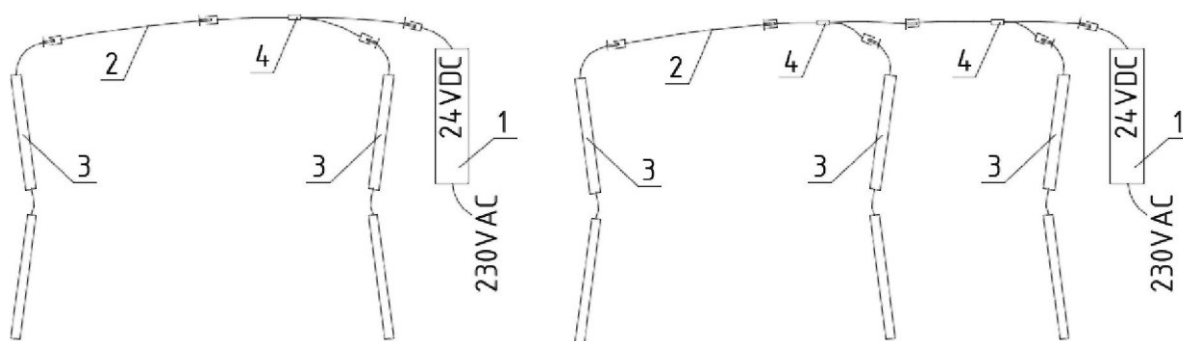
1. Fully extend the awning.
2. Using a flat-bladed screwdriver, remove the end caps from the ends of the receiver grooves on the scissor arms; do not remove the end caps facing the front beam.



3. Degrease the inner surfaces of the receiver grooves.
4. Press in the LED strip into the scissor arm receiver grooves so that the LED strip locks in place; remember that the LED strip plug must face the awning drive box.
5. The LED strip section will pass under the scissor arm joints.



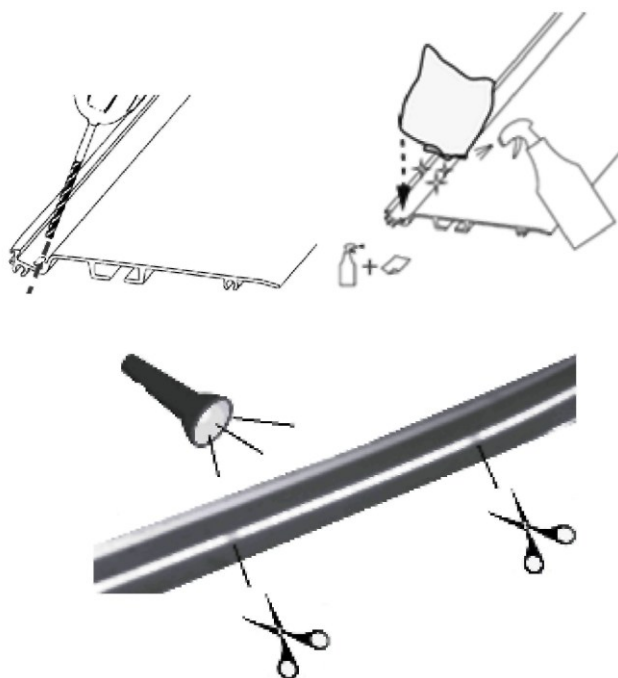
6. Attach the PCU in a convenient location (e.g. the back of the scissor arm bracket square profile) using suitable fasteners (not included), like zipties.



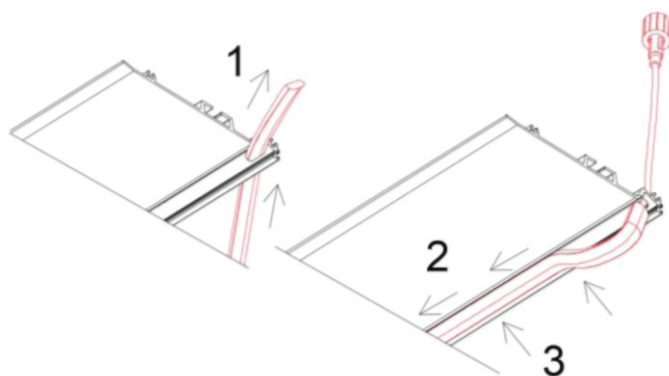
7. Wire the scissor arm LED strips according to the diagrams shown above (for twin or triple scissor arm awnings, as applicable). Secure the plugged in connectors with the threaded sealing caps. (1 – PCU; 2 – Extension cable; 3 – Scissor arm COB LED strip; 4 – Three-way adapter)

**NOTES: The PCU must be isolated from electrical supply until the kit is fully wired.**

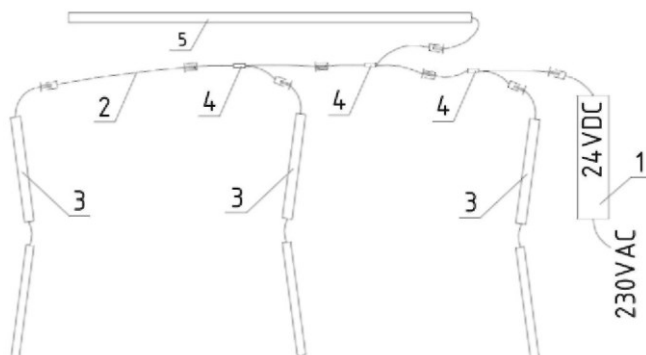
#### 4.6.2 BOTTOM FASCIA LED STRIP



1. The Corsica awning can have another LED strip installed on the bottom fascia of the scissor drive box. Before proceeding with this installation, make a slot at the corner of the receiver groove on the bottom fascia to facilitate entry of the LED strip (5.5x12.4 mm). The recommended slot open dimensions are approx. 8x14 mm (the slot can be made by drilling two dia. 8 mm holes one next to another, followed by filing the leftover wedges flush to form a neat, straight edge between the centres or opening the slot going from the side of the fascia).
2. Degrease the entire length of the receiver groove.
3. Measure the receiver groove length. Uncoil the LED strip from the reel and trim it to size on the end opposite to the plug. Cut across the potted copper bars which are visible from the back of the LED strip under e.g. a torch light pointed square at the LED strip. Thin cut-off marks are displayed on the back of the LED strip for convenience.  
**CAUTION:** Never cut the LED strip outside of the cut-off marks.
4. Secure the cut end of the LED strip to be installed using clear silicone caulk, if needed.



5. Pull the LED strip (with the end opposite to the plug first) through the slot in the fascia (see step 1) and towards the opposite end of the receiver groove (see step 2), followed by pressing the LED strip in until it clicks in place (see step 3). The cable and plug will be on the inside of the fascia.



6. For the Corsica LED strip kit, wire the LED strips (in the scissor arms and the bottom fascia) according to the diagram above. Secure the plugged in connectors with the threaded sealing caps.  
(1 – PCU; 2 – Extension cable; 3 – Scissor arm COB LED strip; 4 – Three-way adapter; 5 – Bottom fascia COB LED strip (needs to be trimmed to size)).
7. If only the bottom fascia LED strip (item 5 above) will be installed in the Corsica awning, connect the LED strip directly to the PCU (1) (see the figure above).

**NOTES: The PCU must be isolated from electrical supply until the kit is fully wired.**



Note:

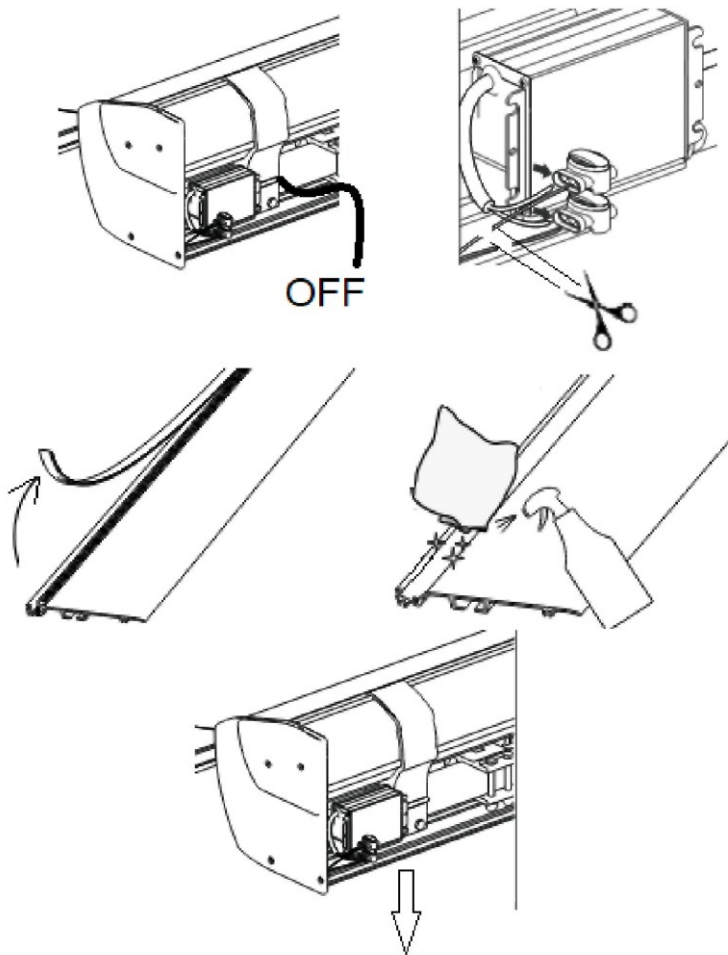
If the LED strip fails to be secured with snap locks (this may happen due to unavoidable paint coating tolerances of the receiver groove), it is recommended to spot-apply an adhesive inside the receiver groove while inserting the LED strip.

#### 4.6.3 REPLACING THE BOTTOM FASCIA LED STRIP

If the awning already has another LED strip (not silicone compound-potted) installed in the bottom fascia by the buyer or the awning is to be retrofitted with the scissor arm LED strips and/or the bottom fascia LED strip kitted in this product, remove the existing LED strip and its power supply as instructed in the steps below. Next, install the product's components, see 4.6.2 or 4.6.1, as applicable.



A generic LED strip to be installed in the bottom fascia requires a 12 V DC supply. SELT's silicone compound-potted LED strip requires 24 V DC.



1. Disconnect the LED power supply unit from the mains. Cut off the LED strip power wiring from the PSU.

2. Remove the LED strip from the receiver groove, along with all the wiring that was cut off. If necessary, make the existing opening/slot in the fascia bigger to pass the plug of the new LED strip cable (the slot clear size required will be ca. 8 mm).
3. Carefully degrease the inside of the receiver groove and remove all residues of adhesive, if any.
4. Remove the existing 12 V DC PSU along with its wiring.

## 4.7 ELECTRICAL POWER SUPPLY

### 4.7.1 WIRING THE ELECTRICAL POWER SYSTEM

Once the LED light kit has been installed, wire it to the power service line which needs to be prepared in prior. The LED light kit needs to be wired according to an electrical wiring diagram dedicated to the application (and made by a licensed engineer) and in compliance with protective earthing/electrocution protection. The wiring work must be done by a licensed electrician.

Wire the LED light kit as specified in the OEM instructions for the PCU and the LED strip(s). These instructions are attached to this product or available from the OEM websites and Selt's official website:

[www.selt.com](http://www.selt.com) → OUR OFFER → ELECTRIC EQUIPMENT

**Wire the LED strips according to the PCU type:**

#### **230VAC → 24 VDC PCU → LED strips + Somfy 5-channel remote control**

This PCU has 1 output, which can accommodate 1 LED strip and the power wiring extended to more LED strips using three-way adapters.

#### **High-risk environment:**

High-risk environments include: bathrooms and showers, kitchens, garages, basements, saunas, pet rooms, hospital operating theatres, pressure boosting plants, heat exchangers, spaces enclosed by conductive surfaces, camping sites, outdoor areas, etc.

High-risk environments require automatic circuit breakers on the power service lines feeding the LED light kit, like residual current devices (RCD). This is recommended for installations in bathrooms, kitchens, garages and basements. Automatic circuit breakers/RCDs are mandatory by law for applications that involve swimming pools, showers, saunas, construction sites, outdoor equipment power supplies, farming or horticultural facilities, camping sites, recreational vehicles (campers) and rooms in fire hazard areas.

#### 4.7.2 COMMISSIONING AND ADJUSTMENT

- Before powering on the LED light kit, the safety electrical tests must be done as required by applicable codes.



Wrong power and control wiring may result in equipment failure or hazards.



The PCU is approved for a maximum operating temperature of 45°C and a maximum enclosure temperature of 80°C.

### 5 SYSTEM OPERATION AND PRODUCT SAFETY



This product is approved for operation only if absolutely defect-free.

#### 5.1 GENERAL HEALTH AND SAFETY REQUIREMENTS

- To ensure proper performance of this product, SELT Sp. z o.o. prohibits any design alterations. Failure to comply will release SELT Sp. z o.o. from any and all liability for the product, injury, or damage, whereas the buyer will forfeit their commercial or statutory warranty rights.
- During transport, installation, removal, operation, care and maintenance of this product, the relevant health and safety and environmental regulations must be complied with.
- This product requires maintenance and repairs only by professionals with proper authorisation and qualifications (training).
- The personnel directed to routinely operate, care and preventively maintain the product must read, understand, and fully comply with the Installation, Operation and Safety Instructions.
- Never attempt to clean this product in any manner not specified in "Inspection, Maintenance and Repair".
- The power and control system should be installed and inspected by a licensed professional.
- Maintenance and repairs can only be attempted on this product after isolating it from electrical supply.
- Do not obscure any markings on the product with e.g. paint or deface the markings, rendering them illegible.
- Every modification of electrical plans or the configuration of electrical fittings is recommended to be consulted in prior with SELT Sp. z o.o.
- Do not keep any heat sources below the awning, like barbecues or open flames.



#### 5.2 SAFETY REQUIREMENTS FOR SPECIFIC OPERATING CONDITIONS AND LOCATIONS

Special safety requirements apply to children from one to 42 months. Special operating requirements apply wherever small children have or may have access to this product, like private homes (dwellings), children's homes or daycare centres, hospitals, churches, schools, nurseries, public places and any other location accessible to children. If the application of this product is changed so that any of the foregoing conditions apply, consider and follow these requirements.

Special operating requirements also apply to all locations which are or can be accessed by the disabled.



Before operating the product, the buyer is required to do an individual risk assessment for the planned use, with specific focus on the safety of children and the disabled.

When determining the operating requirements for this product, it is important to consider reasonably foreseeable operating conditions and potential hazards.



Never allow children to play with electrical light control equipment. Keep the remote controls away from children.



Routinely inspect the wiring system for wear and wiring damage. Do not use the product if any repair is required.



Keep the product away from hot objects (e.g. heaters, stoves, furnaces, boilers, irons, flue stacks, etc.) and do not place any mobile/portable sources of heat convection under the awning (e.g. hotplates, stoves, barbecues, etc.); otherwise there is a risk of damage.

### 5.3 OPERATING SAFETY

#### Recommendations and actions:

- This product is safe to use provided that the instructions in the Manual are followed and that it is installed correctly.
- Use the product only for its intended purpose.
- Never use the product if it does not conform with electrocution protection and/or fire safety requirements.
- Keep remote controls out of the reach of children – remote controls are not toys.
- Never attempt to operate the product if defective/faulty or attempt any makeshift repairs.
- Never exceed the operating limits specified in the Operating and Maintenance Manual.
- Never attempt to operate the product if out of order or incomplete (e.g. with a control switch missing, etc.); operation may result in product failure, health and life hazards, and voiding of the commercial warranty.
- Use genuine spare parts only.
- All inspection and repairs of this product must be done by properly trained professionals with the required licenses and qualifications.
- Never attempt to operate this product and its electrical power system without valid mandatory safety inspections and tests.
- Before attempting any maintenance or cleaning of this product, isolate it from electrical supply.
- Look for any evidence of wear or damage of wiring.
- If wiring is found to be worn or damaged, isolate the product from electrical supply and have a licensed professional repair the problem.
- If using sharp implements, try not to damage the silicone compound potting of the LED strips.
- Make sure that electrical wiring connections are in good repair and that no power wiring is tangled.
- • When cleaning this product, beware of moving parts and the risk of injury. Isolate the product from electrical supply. Display signs to warn about the ongoing servicing and secure the access to the work area. Start cleaning the product by removing loose dirt using a vacuum cleaner with a brush tip or use a duster. Follow by wet cleaning with water, a mild detergent and soft cotton cloth. Always rinse the cleaned surface with water only (any detergent must be used according to its manufacturer's instructions). Do not use abrasive cleaning products or pressure washers, or the product coating may fail.

If the product is found to malfunction in any way, immediately report this to the authorised service of SELT Sp. z o.o. Operating a defective product and unauthorised attempts at product repair are hazardous to health or life and may void the commercial warranty rights.

### 5.4 CONTROLS

Program the product controls (pair the remote controls, weather sensor and other control units, as applicable) by following the OEM instructions for the control solution.

Programming instructions, which vary with the control system implemented, are available from the OEM websites and Selt's official website:

[www.selt.com](http://www.selt.com) → OUR OFFER → ELECTRIC EQUIPMENT





Install the control unit at a location safe from harmful weather and rain, and away from the reach of children. SELT recommends installation behind the bracket square profile at the building's wall.

## 5.5 COMMISSIONING AND ADJUSTMENT

- Before commissioning this product for use, electrical safety testing must be carried out primarily to verify the neutral line. This must be done by a licensed electrician.

## 5.6 SYSTEM MISUSE

### Operating “Do-Nots” of the system

- Do not use this product if it malfunctions or its performance suggests a malfunction. It is best to discontinue operation.
- Report the issue to the vendor / system installer.
- Do not use the product if there is wear or damage found in the power wiring. Report the issue immediately to the reseller.
- Do not use the system if its operation is defective or any of the components is missing. Otherwise the operation will result in irreversible product failure with life or health hazards to the user, and may void the commercial warranty.
- Never use the product if it does not conform with electrocution protection and/or fire safety requirements.
- Never exceed the operating limits specified in the Operating and Maintenance Manual.
- Do not keep any sharp objects/implements or protruding features near the system that could snag and/or scratch its components.

### Designated operators

- Never let children play with the system controls, like remotes or switches.
- Keep the remote controls away from children.

Automatically controlled products can start unexpectedly. When servicing this product, lock it out safely to prevent accidental startup. Make sure that all hazards will be prevented.

## 6 USE AND MAINTENANCE OF THE SYSTEM

### 6.1 INTENDED USE OF THE SYSTEM

This system must be used as intended by the manufacturer in the specifications. If the system is operated or modified in any manner not specified in this Manual, the manufacturer will have the right to reject all claims for commercial or statutory warranty.

If the product is used in any way not specified in this Manual or modified without the authorisation from SELT Sp. z o.o. it is considered as misuse of the product.

Unauthorised alterations which affect the operating safety of the product are prohibited.

Intended use of this product includes:

- Normal or foreseeable specified use, which is aside from e.g. any risk taken by the product user wilfully or with full awareness;
- Operation within the specified operating parameter limits;
- Compliance with the operating instructions;
- Proper periodic product inspection and maintenance;
- Compliance with this Manual;
- Compliance with the “Technical Specifications” in this Manual.





In case of misuse:

- The product may endanger its operators;
- The product is exposed to damage;
- The product's performance can be restricted;
- Do not operate the system during its maintenance or repairs or otherwise as prohibited by the manufacturer.

**SELT Sp. z o.o. will not be liable for any damage caused by misuse.**

## 6.2 INSTRUCTIONS FOR NON-PROFESSIONALS

Non-professionals are those whose activities involve routine use and inspections of this product.

Before using this product for the first time, carefully read this Manual.

A thorough understanding of this Manual will help with safe and trouble-free operation of the product.

### List of operations allowed to non-professionals:

- Routine operation of the product using its remote controls;
- Routine inspection of the product by testing the LED light power on and off controls;
- Ordering inspections, repairs and cleaning from a professional installer.
- 

## 6.3 SPECIFICATIONS OF RISKS, FAILURE AND ACCIDENTS

Description of residual risks

Risk factor	Proper procedure
Accident	<ul style="list-style-type: none"> <li>- Isolate the product from the power supply.</li> <li>- Provide first aid to the injured.</li> <li>- Call for help — contact emergency services by phone.</li> </ul>
Product failure (hazard)	<ul style="list-style-type: none"> <li>- Isolate the product from the power supply.</li> <li>- Keep all users away from the hazardous area.</li> <li>- If there is a fire, suppress with ABC-charged extinguishers only.</li> <li>- Call the fire department if needed.</li> <li>- Report the issue to the service centre.</li> <li>- If the failure only results in jamming of the product and no other hazards are involved, refer to "Product failure (jamming)".</li> </ul>
Electrocution	<p>The electrical wiring system must be installed in compliance with the national electrical codes.</p> <ul style="list-style-type: none"> <li>- Double-insulated electrical wiring in additional protective sheath against damage and UV light</li> <li>- Residual current device (RCD)</li> </ul>
Wiring fault and fire	<ul style="list-style-type: none"> <li>- Wiring conductors with a core cross-section sufficient for the power load ratings and the selected overcurrent protector</li> <li>- Overcurrent protector specified properly for the power load ratings</li> </ul>

## 6.4. TECHNICAL INSPECTIONS AND REPAIRS

### Routine inspections

These are to be done by the buyer. SELT recommends the following inspection intervals.

### Basic servicing during routine inspections:

- Visually inspect the product and remove all dirt and debris of organic origin (immediately when found).
- If a defect is found, isolate the product from the power supply and immediately request servicing to repair the product.
- Isolate the product from the power supply (to prevent any operation by the automatic controls) before each routine inspection involving exposure to moving and electrical components of the product.
- If the product is installed more than 2.5 m above the ground, this servicing is best done by professionals.

## Technical inspections

These are done by SELT or a professional installer for a fee after the warranty period. The scope of each technical inspection is always at the discretion of the professional installer; each completed technical inspection is certified with a service report.

## Cleaning



Always isolate the product from electrical supply before cleaning.

### Cleaning of silicone and metal/aluminium components:

- It is recommended to remove light dirt from accessible metal/aluminium surfaces using water with some gentle detergent and a soft cotton cloth. Always rinse the surfaces clean with water afterwards.
- Remove all dirt and debris of organic origin immediately when found.

### Product cleaning “Do-Nots”:

- Do not clean with pressure washers or aggressive cleaners, rough sponges or solvents (like alcohols or petrol/gasoline).
- Never clean the system or anything near it with any products that contain chlorine, ammonia, petroleum, acetone or bleach; otherwise there will be a risk of corrosion.
- Do not use sharp implements or tools (like wire brushes) or abrasive cleaners which may result in scratches (like scouring powders or pastes).
- Do not grasp or pull the system or its components firmly.
- Do not replace any failed components with unauthorised spares! Use genuine spare parts only!
- After cleaning, reconnect the power supply (and controls) and test the operation of the system. If the system performs abnormally (like partial or complete failure to turn on the LED lights), report the issue to the reseller.

## Repairs

Any abnormal or unusual performance of the system requires user intervention and a report to a professional installer. Repairs will be done by SELT Sp. z o.o. or professional installers under a separate contract.

## 7 WARRANTY CLAIMS / TECHNICAL DEFECTS

### 7.1 WARRANTY CLAIMS (ON MANUFACTURER'S COMMERCIAL WARRANTY)

Only the original buyer of the product may claim a warranty service.

The warranty claim policy and processing are specified in the General Terms & Conditions of Commercial Warranty and the General Terms & Conditions of Sale.

General Terms & Conditions of Commercial Warranty and the General Terms & Conditions of Sale are available at: [selt.com](https://selt.com)

The customer may submit a warranty claim on the Claim Form, which is available on the manufacturer's B2B Platform.

The warranty claim should exhaustively specify the nature of claimed defect, with the Claim Form properly filled out.

Any warranty claim submitted via any channel other than the B2B Platform or missing any details required on the Claim Form, like

the purchase invoice number, purchase order number or contract reference will be rejected.

### 7.2 TECHNICAL DEFECTS

If the system develops a defect:

- Remove the product from service, if feasible to do so;
- Immediately report the defect to the proper professional installer.

**8 DISMANTLING / DISPOSAL / LIQUIDATION OF THE PRODUCT**

Improper installation of the system may result in severe injury and damage of the system.  
The system should be dismantled by a professional installer or a professional with proper health and safety training and understanding of good waste recovery practices.

**(a) Disposal of waste electrical and electronic equipment (WEEE)**

Once this product reaches its end of life, its disposal requires dismantling and separation of components and materials by type according to the waste segregation requirements established in the Polish Regulation of the Minister of Climate dated 2 January 2020 and concerning the Waste Catalogue.

**Important advice on disposal:**

Pursuant to the WEEE (Waste Electrical and Electronic Equipment) Act of 11 September 2015, it is illegal to dispose of WEEE, which is labelled with a crossed out wheelie bin symbol, with other waste (mixed or household). Anyone wishing to dispose of WEEE is required to bring it to a dedicated WEEE collection facility.

These legal obligations have been established to reduce the volume of waste generated from WEEE and ensure the correct levels of collection, recovery and recycling of such waste. This product features no hazardous components which would be extremely adverse to human health or the environment.

No.	Subject	Applicable European laws	Applicable Polish laws
1	Waste electrical and electronic equipment (WEE)	Directive 2012/19 EU of the European Parliament and of the Council of 4 July 2012 on waste electrical and electronic equipment (WEEE)	WEEE (Waste Electrical and Electronic Equipment) Act of 11 September 2015 (Dz. U. 2020.1893, as amended).
2	Waste Catalogue	Regulation (EC) No 2150/2002 of the European Parliament and of the Council of 25/11/2002 on waste statistics	Polish Regulation of the Minister of Climate dated 2 January 2020 and concerning the Waste Catalogue (Dz. U. 2020.10)

**b) Disposal of spent electrical batteries**

Pursuant to the Waste Electrical Batteries Act of 24 April 2009, **the end-user** shall return all spent portable/mobile electrical batteries which are no longer a feasible electrical power supply to a dedicated waste battery **collector** or reprocessing facility. Never dispose of spent electrical batteries with any other waste in the same waste collection bin.

To prevent environmental contamination and potential hazards to human or animal health, dispose of spent electrical batteries in dedicated waste battery bins at designated collection facilities.

No.	Subject	Applicable European laws	Applicable Polish laws
1	Waste electrical batteries	Directive 2006/66/EC of the European Parliament and of the Council of 6 September 2006 on batteries and accumulators and waste batteries and accumulators and repealing Directive 91/157/EEC	Waste Electrical Batteries Act of 24 April 2009 (consolidated in Dz. U. 2024.1004)

**9 CE LABELLING AND MARKING OF THE PRODUCT****9.1 PRODUCT CONFORMITY WITH THE CE STANDARDS**

This LED light kit has a CE marking to certify that it conforms with the essential product directives and standards established for power supplies, control units, and LED strips, as proven by the OEM declarations of conformity issued for the power supply, the control unit and the LED strips.

FOR CONTINUED COMPLIANCE AND SAFE USE AND MAINTENANCE OF THE SYSTEM, CONFORM TO THE INSTALLATION, OPERATION AND SAFETY INSTRUCTIONS.

**10 LIABILITY DISCLAIMER**

See the General Terms & Conditions of Commercial Warranty on [www.selt.com](http://www.selt.com). If you cannot access the official website of SELT Sp. z o.o., you may reach out to the nearest SELT distributor for a copy of the General Terms & Conditions of Commercial Warranty.

**10.1 LIABILITY DISCLAIMER**

SELT Sp. z o.o. shall not be held liable or discharge any commercial or statutory warranty rights in the event of:

- Damage caused by transport handled by anyone else than SELT.
- Damage caused by storage, installation, use or maintenance of the product in departure from the Operating and Maintenance Manual, the Instructions or manufacturer's recommendations, unless any of these activities have been done by the manufacturer.
- Damage resulting from any alteration of the system, unless done by the manufacturer, on its request or by its written permission.
- Secondary damage resulting from operating the product with any of its original defect ignored unless the manufacturer has been advised of the defect and authorised continued operation. The ascertainment of the root cause of defect will be left to reasonable discretion of the manufacturer. For a fee, the manufacturer may replace or repair the product suffering from the defects specified below:
  - Defects caused by age and normal wear and tear of product parts.
  - Damage and electrical failure attributable to the user.
  - Damage caused by incorrect installation of the product.
  - Damage caused by unauthorised repairs.
  - Damage caused by operation of the system in poor weather (in weather conditions not specified or prohibited in the Instructions).
  - Damage caused by extreme weather (lightning strikes, storm, hail, water, or fire).
  - Damage consequential to accidents, emergencies and mishaps.
  - Damage consequential to poor cleaning using wrong implements, corrosives, or abrasives.
  - Fouling by weather or organic dirt and debris, as well as soiling by animals.
  - Fouling of the LED strip silicone potting by the pollution present urban settings (smog, smoke, acid rain, particulate matter).
  - Damage caused by the effects of other products, objects or any accessories suspended on the awning/this product not provided for by SELT.
  - Colour variations between the parts as a result of manufacturing process specifics.
  - Discolouration/colour fading of parts highly exposed to weathering.
  - Corrosion of parts exposed to operation in high salt concentrations in the air.

SELT shall not be liable for:

- Any product with its CE marking sticker removed, missing or made illegible.
- Any product with any of its safety, warning or notice symbols removed.
- Any misuse or non-intended use of the product.
- Damage caused by mains voltage fluctuations of more than 5% of the rated mains voltage or faults in the controls.
- Keep all heat sources, like barbecues or open flames, away from the system to prevent overheating of the product.
- SELT Sp. z o.o. shall not be liable for any consequences of failure to comply with this Manual or any consequences of any events that the installer or project owner should have reasonably considered during the project/installation work on the product or other work affecting the product.

Notwithstanding the above, the scope of liability of SELT Sp. z o.o. is limited and defined in the contract concluded with the buyer of this product.